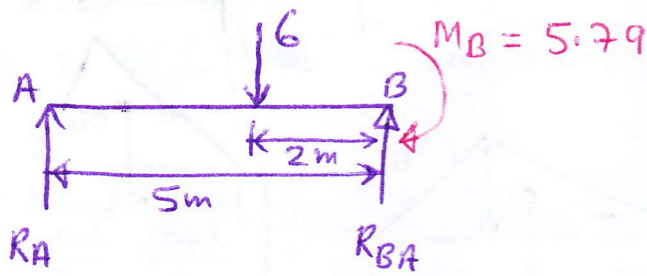


Next, find the reactions, R_A , R_B , R_C & R_D

(6)

Consider span AB



Take moment at B ($\sum M_B = 0$)

$$R_A * 5 + 5.79 = 6 * 2$$

$$R_A = 1.24 \text{ t}$$

$$\sum F_V = 0$$

$$R_A + R_{BA} = 6$$

$$\therefore R_{BA} = 6 - R_A = 6 - 1.24 = 4.76 //$$

Consider span BC

Take moment at C ($\sum M_C = 0$)

$$R_{BC} * 6 + 6.38 = 5.79 + 2 * 6 * 3$$

$$R_{BC} = 5.9 //$$

$$\sum F_V = 0$$

$$R_{BC} + R_{CB} = 2 * 6 \quad \therefore R_{CB} = 12 - 5.9 = 6.1 //$$

Consider span CD

Take moment at C ($\sum M_C = 0$)

$$R_D * 5 + 6.38 = 8 * 3$$

$$R_D = 3.52$$

